

BOLL High-Pressure Cleaning Unit TYPE 5.04

Prolong the use of filter elements

To efficiently regenerate filter elements that have become engrained with contaminants and secure full functionality, it is recommended to manually clean the filter mesh from time to time. Optimum results are achieved by using the BOLL high-pressure cleaning unit type 5.04 in combination with the special cleaning fluid BOLL-CLEAN 2000.

The unit is suitable for both the cleaning of individual filter elements and for complete filter inserts. Moreover, it can be used for the cleaning of other small parts.

Soak, rinse, ready!

Cleaning of the filter elements is easy and trouble-free. The filter element is soaked in the soaking tank ① filled with the cleaning fluid BOLL-CLEAN 2000 ②. The soaking time depends on the type and grade of contamination.

The filter element is then placed on a perforated plate in the spraying tank ③ and washed out with a high-pressure cleaning lance ④. The process is clean for the user as well because the spraying tank is enclosed and the perforated base plate helps avoid the formation of spray clouds.



Reduce costs, save resources

Regular cleaning of filter elements and filter inserts prolongs their service life and reduces expenditure on consumable items. The cleaning fluid is constantly recycled and being cleaned by a micro-filter ⑤ on the

pressure side of the pump as it is used again and again over a long period of time, also giving a cost-saving due to the low consumption of the cleaning fluid.

Two sizes and two lances

The high-pressure cleaning unit is supplied mounted on a base frame ⑥ with lockable castors and equipped with a high-pressure pump ⑦ and a pump protection filter ⑧. The unit is available in two sizes to cover the wide range of Boll filter elements available (see table).

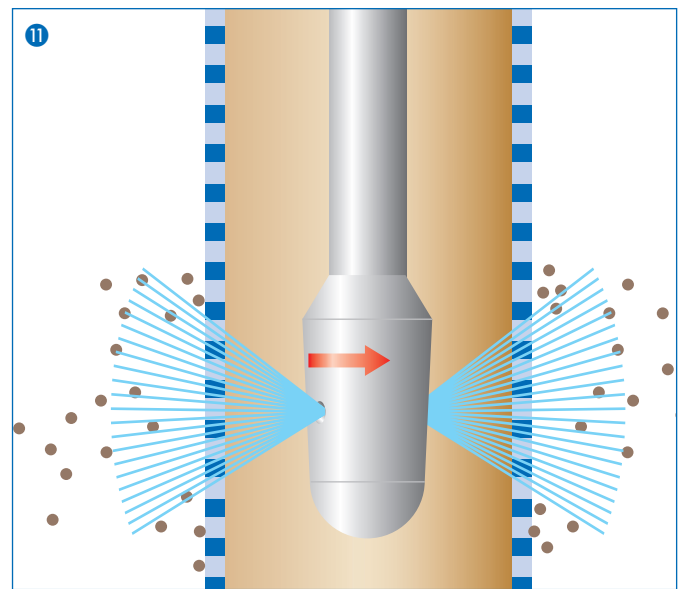
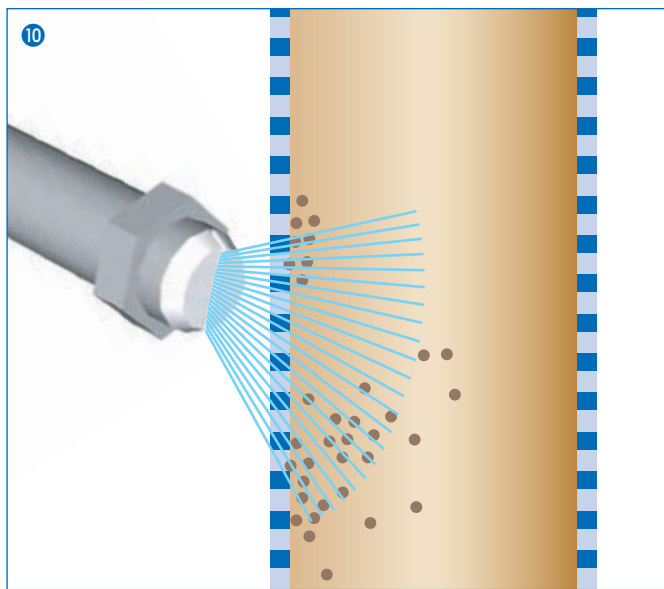
Both sizes are delivered with two

different, replaceable cleaning lances, which are fastened to the cleaning gun ⑨ by means of a quick-lock coupling.

- The cleaning lance type 5.02 ⑩ with the flat jet nozzle is suitable for the majority of applications, particularly for the outside of star-pleated elements, basket elements and ring filter elements. Moreover, the out-

side of individual multimantle elements can be cleaned with the nozzle.

- The cleaning lance type 5.01 ⑪ with rotary nozzle is particularly suitable for cleaning the inside of screw-in and plug-in candles in case of extreme contamination, e.g. fuel and rolling oil filters.



Technical Data

High-pressure cleaning unit type 5.04

Size	355/500	435/750
Length	995 mm	1285 mm
Width	500 mm	700 mm
Height	1000 mm	1260 mm

Maximum size of filter elements to be cleaned:

Size	355/500	435/750
Diameter	355 mm	435 mm
Length	500 mm	750 mm

Pump motor:

- 220/380 V, 50 Hz; 440 V, 60 H
- Protection class IP 55
- Insulation class F
- Overload protection by thermal switch

Delivery rate of the pump:

- max. 9 l/min
- Pressure: 85 bar
- Temperature: max. 70° C