

## CARE FOR CLARITY



aquaBoll

Application Expertise Included



The new automatic filter aquaBoll

## The challenge: Flexibility, efficiency and adaptability

As the technology leader in industrial filtration, BOLL & KIRCH always strives for innovative and sustainable filtration solutions. This guiding principle is the basis for the realisation of a new concept for fully automatic water filtration. The

aquaBoll automatic filter series significantly increases the overall plant efficiency of your specific application through optimised functionality and novel adaptability.

# aquaBoll

Individual platform concept ✓

Minimal operating costs ✓



A revolution in water filtration

## The solution: A failsafe platform concept

The individuality and performance of the aquaBoll filter is based on a novel platform concept, which is realised by a multi-part housing with wide adaptive possibilities – and all that in the smallest space. Filter

elements, variable connection-flange positions as well as different housing materials are essential components for optimal adaptation of the automatic filter for your specific filtration requirements.



- ✓ Adaptive filtration configurations
- ✓ Multi-part housing construction
- ✓ Various housing materials
- ✓ Various interior and exterior coatings
- ✓ Flexible positioning of connection flanges
- ✓ High flow rates in minimum installation space



High performance is our standard

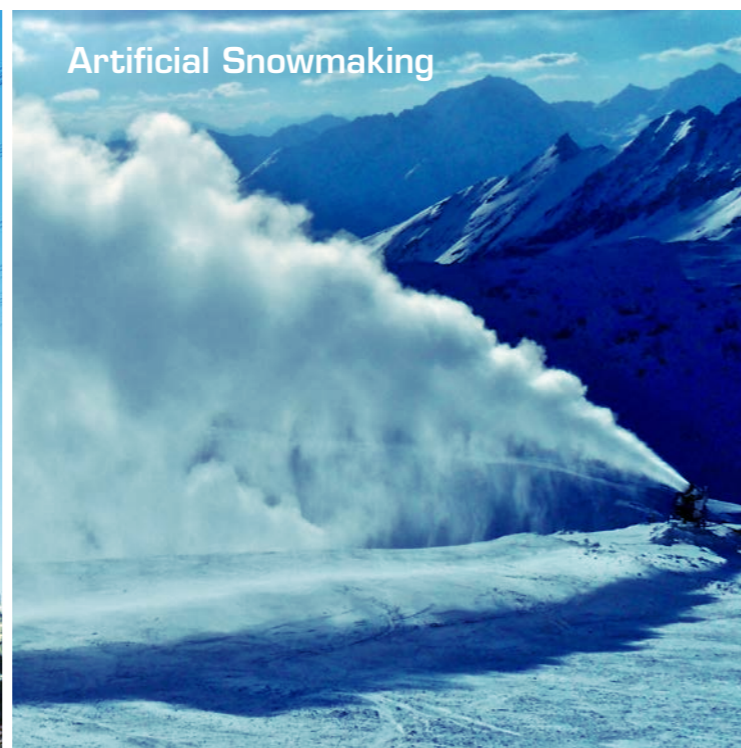
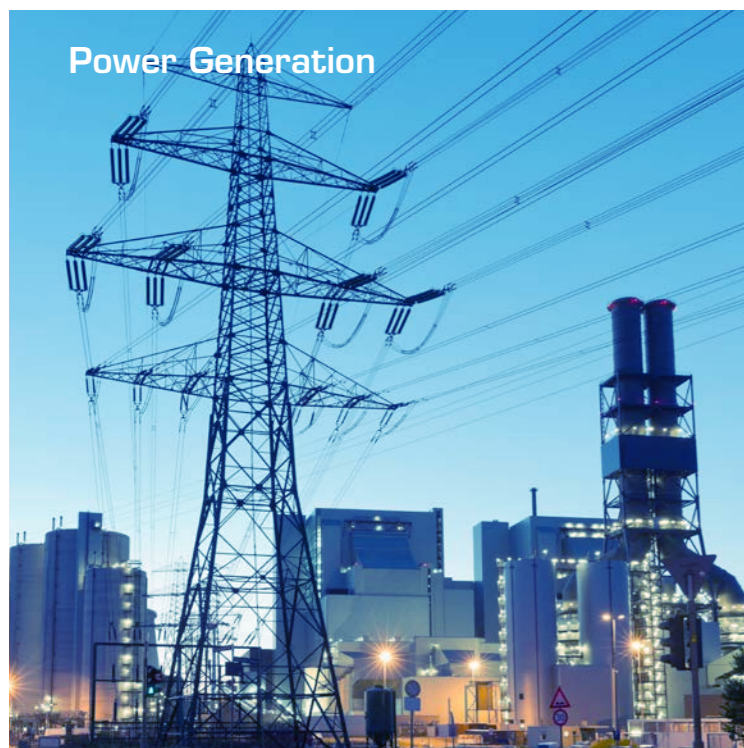
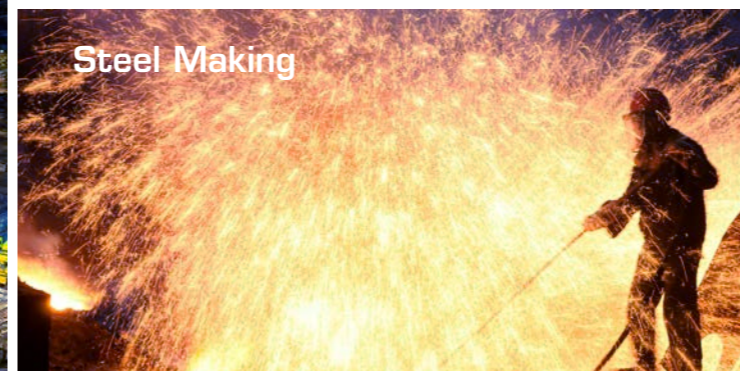
# Delivers clarity: aquaBoll in your specific application

The aquaBoll automatic filter is especially capable of handling demanding situations and the toughest conditions. Complex filtration processes can be mastered in every application by the special properties

and functions. The standardised multiple platform concept ensures low acquisition costs and high flexibility. The compact design allows easy access to all relevant components. Thus, commissioning and maintenance

expenses are reduced considerably. Service speeds are significantly improved due to easy access and increased availability of standardised components. The combination of innovative design, high-quality components and

a long service life allows for a cross-sectoral approach. This leads to a sustainable increase in water quality. The aquaBoll is thus able to meet the requirements of a wide range of industries with unprecedented efficiency.





## The priority: Optimum protection of your application

- ✔ **Standardised components**
- ✔ **Innovative backflushing technology**

The aquaBoll ensures the protection of the actual application with a consistently high filtration quality and failure safety. Standardised and high-quality components lay the foundation for this. The

optimised operation with fully automatic backflushing technology keeps running costs low. Failures and malfunctions of your application are a thing of the past.



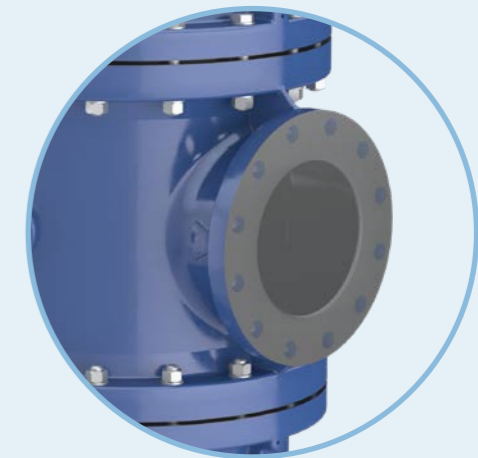
### **Platform-based housing concept**

The rotative adjustability of the housing components allows positioning of the connection flanges to suit your system. Housing and coating materials are individually configurable.



### **Fully automatic backflushing technology**

The filtration process takes place continuously and without interruption thanks to our fully automatic backflushing technology. Parallel to the filtration process, backflushing takes place either controlled by differential pressure or by programmable time intervals.



### **High flow rates at maximum variability**

The high individuality of aquaBoll is provided by the novel platform concept, which is based on a multi-part housing with wide adaptation possibilities. This allows the highest flow rates in the smallest possible space.

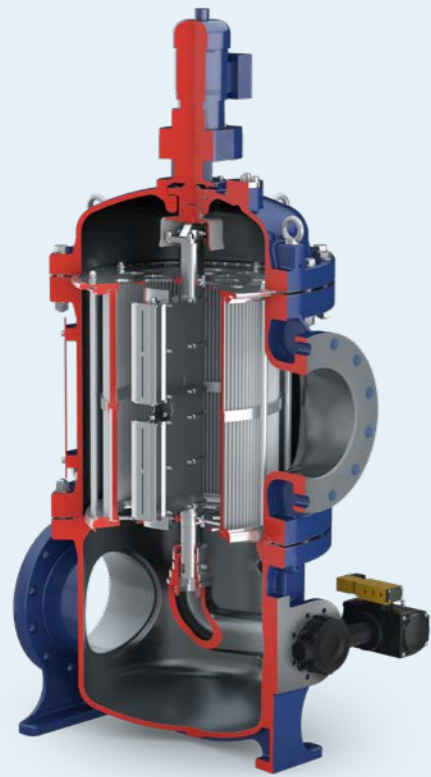
Reliability through quality

# Technical specifications: Our know-how sets high standard

Three concepts of adaptive filtration elements are available to optimise the filtration conditions: filter candle, sieve cylinder and fine sieve cylinder. Depending on the size, the required filtration efficiency and the degree of contamination of the

process water, these are interchangeable and adaptable. Special conditions may require special profiles that can be included in the adaptive elements, thus covering all applications.

- ✔ Flexible filtration concepts
- ✔ Maximum adaptability



**Fine sieve cylinder element**

**fineness**

10 µm - 80 µm

**nominal diameter connection flanges**

DN 50 - DN 500 (2" - 20")

**housing diameter**

273 mm - 750 mm



**Filter candle element**

**fineness**

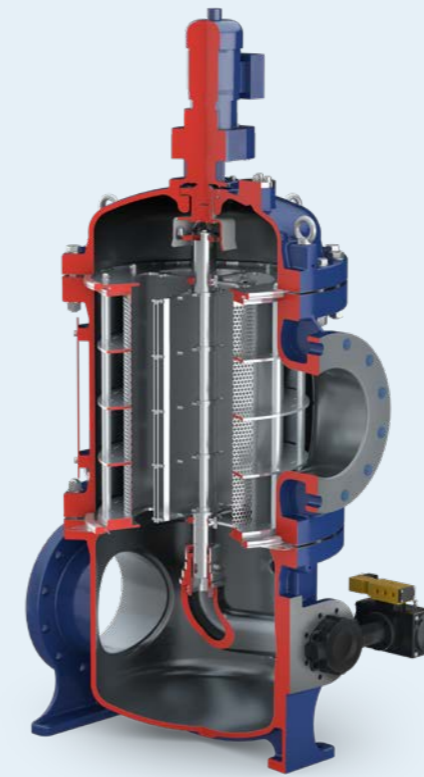
100 µm - 1 mm

**nominal diameter connection flanges**

DN 50 - DN 1000 (2" - 40")

**housing diameter**

273 mm - 1350 mm



**Sieve cylinder element**

**fineness**

2 mm, 3 mm and 5 mm

**nominal diameter connection flanges**

DN 50 - DN 500 (2" - 20")

**housing diameter**

273 mm - 750 mm



Flexibility and precision for best results in filtration

The premium products of BOLL & KIRCH are setting the benchmark in the field of cleaning process fluids. Our constant and continuous engineering guarantees self-cleaning solutions in filtration to increase the overall efficiency of your application to a new level.

- Improved cleaning result
- Effective plant protection
- Considerable cost reduction

Regarding the realisation of application-oriented solutions, our customers rely on the flexibility of our processes and appreciate personal consulting and reliable service.

## Contact:

Boll & Kirch Filterbau GmbH  
Siemensstraße 10 – 14  
50170 Kerpen  
Telephone: +49 2273 562 0  
Fax: +49 2273 562 223  
Email: [info@bollfilter.de](mailto:info@bollfilter.de)  
[www.bollfilter.com](http://www.bollfilter.com)

