



Passion. Tradition. Expertise.



The future always needs a past

As a global leader in technology for industrial filtration solutions, it is our mission to fulfill and exceed the requirements of our customers to the greatest extent possible. We are a family business which plans ahead and have been meeting the expectations of our partners in a highly diverse range of industries throughout the world with our high quality products **for more than 70 years**. In everything we do, we are guided by the firm conviction that optimum solutions are best achieved in close cooperation and that this is the only way to ensure lasting benefits.

With the **experience** of our inhouse research & development experts, we offer exactly what you need: Efficient and long-lasting products which meet the highest quality standards. As an **independent company with a long tradition** and state-of-the-art facilities we are a strong partner for our customers. At our business premises of 39,000 m² we have 20,000 storage spaces in the logistics center, a high-bay warehouse with automated operation, more than 30 CNC machining centers, flame-cutting, welding and handling robots and a computer-controlled paint shop. In every step of production involving these technologies we naturally strive for efficient procedures, the optimum use of resources and the minimization of material waste.

But for us that is not enough: Instead, **environmental protection**, based on our many years of business activity, has always been the field in which we are active - and in which we aim to continue setting an example with a great sense of responsibility. This is taken into consideration in our values and actions and the potential effects of all decisions.

Why choose BOLLFILTER

- More than 70 years of experience
- Worldwide network for on-site solutions
- Strong, independent and financially well secured family-run company
- From standardized products to custom-tailored solutions

Clean for sure

People are prone to using superlatives: Bigger, further – faster – in this way, machinery and plants are constantly taking us closer to the limits of what is possible. We take up the challenges involved and deliver **filtration solutions** for water, gas and oil filtration to protect your capital goods.

Filtration as a process is simple and ever-present in our environment: A liquid or gas passes through a filter element whose mesh, gap or pore openings are sized to ensure that undesired solid particles are removed from the medium. Depending on the required degree of filtration, we distinguish between classical mechanical filtration and fine filtration, in which particularly small particles are removed with the help of membranes.

Based on many years of systematic research into a wide range of influencing factors and their interactions, we can offer systems to the market for a broad range of applications that guarantee maximum safety, reliability and protection during the process and in the final result. This is because we are convinced that our solutions make a lasting **valuable contribution to the protection of the environment**, the conservation of resources and the safeguarding of the values created by people.

Why choose BOLLFILTER

- Provider of filtration technology solutions for complex applications
- Efficient and sustainable solutions
- Easy to use and maintain
- Custom-tailored filtration concepts



Quality starts with know-how

Guaranteed quality is the decisive criterion when it comes to delivering solutions for challenging filtration tasks. Whether it is the protection of expensive engines, the safeguarding of the environment or the well-being of all living creatures – in every step of our operations we are focussing on the **uncompromising quality** of our systems. This is the only way we can meet the requirements of our environmental management system in accordance with ISO 14001 and make a sustainable contribution to the protection of valuable resources such as water, energy and raw materials.

Our quality is secured by a **zero defect strategy** and our **quality management system** which has been established throughout the entire company. No product leaves our company without a comprehensive final acceptance inspection, which means that every BOLLFILTER will be a longtime and reliable partner for many years – guaranteed. A deliberately high level of vertical integration including welding, mechanical processing, filter element production, final assembly, plant engineering and construction also gives us complete control over all the factors which influence quality.

Why choose BOLLFILTER

- Total Quality Management
- ASME U+R Stamp holder
- Certified and integrated management systems for ISO 9001, ISO 14001 and ISO 45001





Worldwide guaranteed: More than just a spare

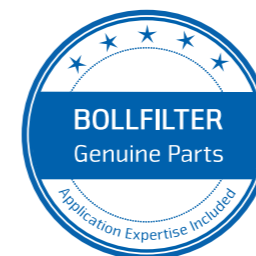
The different types of filters, from simplex and duplex to automatic filters, are highly robust, long-lasting and low-maintenance. But whenever a consumable, which generally means a filter element, needs replacement, we highly recommend to use **genuine spare parts**.

When you place your trust in BOLL & KIRCH, you will always be on the safe side as our genuine spare parts are **precisely designed for the filter**.

Our high quality standards provide the guarantee for maximum performance, safety and reliability for your plant and machinery over the complete lifecycle. Know-how cannot be copied. We ensure the quality of any filter element by using state-of-the-art, high precision machines and production processes and guarantee a consistently high level of material and processing quality. At the same time continuous improvements and innovations will be incorporated in the ongoing spare parts production process.

Why choose BOLLFILTER

- Top quality spare parts
- Maximum availability
- Individual equipment starter kits
- Optimal fit and installation-friendliness



Forward-looking concepts

Industrial areas are characterized by individual process factors, material properties and ambient conditions meaning that special solutions are required to meet the challenges of each specific application. As an expert for complex filtration processes, we set benchmarks with our application-optimized premium products and meet the challenges of these complex conditions with the inhouse development expertise of a large team of engineers. In **agile product development processes** and possibilities given by **simultaneous engineering**, we are able to forge ahead with great flexibility in every form of cooperation.

Every solution which is generated in this way is based on many years of experience and can be tailored to your specific application through the customized configuration of the components, materials and coatings. High-performance **test facilities and a variety of test procedures** enable us to provide a guarantee for all functionalities at all times.

For lasting success and the continuous development of innovations, we work together with various universities and institutes in order to ensure that technical expertise is always complemented by an outside view. The success of this approach is confirmed not only by satisfied customers but as well by many inhouse developments protected by **numerous patents** and utility models.

Why choose BOLLFILTER

- Experienced research and development engineers
- Structure analysis (FEM) & flow simulation (CFD)
- Agile product development processes
- Cooperation with universities and institutes
- High-performance test facilities



Into the future

Thinking long term – acting with responsibility



Sustainable business practices and social responsibility are an integral part of the corporate strategy at **BOLL & KIRCH** and are anchored in every activity. Thus the responsible use of resources, a considered approach to the use of energies and continuous progress are self-evident for us.



Clean water in every environment

Sustainable water treatment is not only highly important for the economical operation of plants and machinery but above all essential for the **protection of the environment**. Through the treatment of process and ballast water, we protect living creatures in all areas of life from harmful impurities. In the field of drinking water treatment and many other applications, BOLLFILTERs contribute to the sustainable **protection of resources**, optimized energy-efficiency and a significant reduction in the use of chemical agents.

However, effective water filtration is also just as important for preventing **damage to plants and machinery** and for ensuring that production conditions are as economical as possible. Thus in the maritime industry, water conditioning, agriculture, power stations or the manufacturing industry, durable and low-maintenance water filters which meet the highest standards and provide trouble-free operation are required. Our BOLLFILTERs reliably guarantee these aspects at all times and deliver outstanding performance in terms of both economical and environmental friendliness.

Why choose BOLLFILTER

- Effective filtration of process, cooling and ballast water
- Sustainable water treatment
- Protection of seawater against organic particles and sediments
- Guarantee of economical production conditions

Sustainable optimization of air quality

The effective and reliable filtration of fuels and lube oils is an essential requirement for the long-lasting operation of machinery, plants and engines – may it be for the engines of massive ships and rail vehicles or in power stations or machines.

Environmental aspects play an important role these days when it comes to the **minimization of emissions and the reduction of air pollution**. Since the relevant application fields involved are varied, we offer you the appropriate filter solution for your specific application: whether it is for the **desulfurization of exhaust gases or the wide-ranging field of renewable energies**.

Thanks to optimized operating conditions, BOLLFILTERs contribute to increased efficiency where fossil fuels and media are used. In this connection they make sure that costs are optimized and help protect resources while also contributing to the desired **reduction in emissions of contaminants to the environment**. After all, this is the only way we can ensure that the natural resources in every environment where engines and power units are in use will remain unaffected and treated with prudence.

Why choose BOLLFILTER

- Reduced emissions of contaminants to the environment
- Protection of fossil resources thanks to optimized operation
- Efficient filtration solutions for ships and power stations for 2-stroke or 4-stroke engines





Resource awareness

The economical use of resources, continuous advancement and the responsible use of energies are a matter of course in everything we do.

In practice, we ensure that valuable commodities are reused and make a major contribution to their efficient use. Examples include concepts and solutions for the beverage industry, in which we support the reuse of bottles. Here, **mechanical and fine filtration are used to remove dirt and microplastic from the cleansing solution of bottle washers.**

Our aim is to do more than comply with statutory requirements and the most common standards; environmental and energy management are at the core of our company. All our employees take this responsibility seriously in all their actions and play an active role in processes of continuous improvement. Together with all our customers and partners, we define measures for concept development, disposal, packaging and transportation of products.

With **BOLL & KIRCH** you have a competent partner for a wide range of different applications – we understand your special process and therefore we do not only protect components with efficient filtration solutions but take full responsibility for the environment and mankind as well.

Why choose BOLLFILTER

- Application-optimized solutions for operation with maximum efficiency
- Optimized use of resources
- Minimized waste of material

Our mission driven by our passion

700 employees at our headquarters in Kerpen, Germany, are the **basis for advanced filtration technology** of the highest standard. Their motivation, commitment and enthusiasm for the best possible results in every part of the company is what truly enables us as Boll & Kirch Filterbau GmbH to really create something great – for more than 70 years.

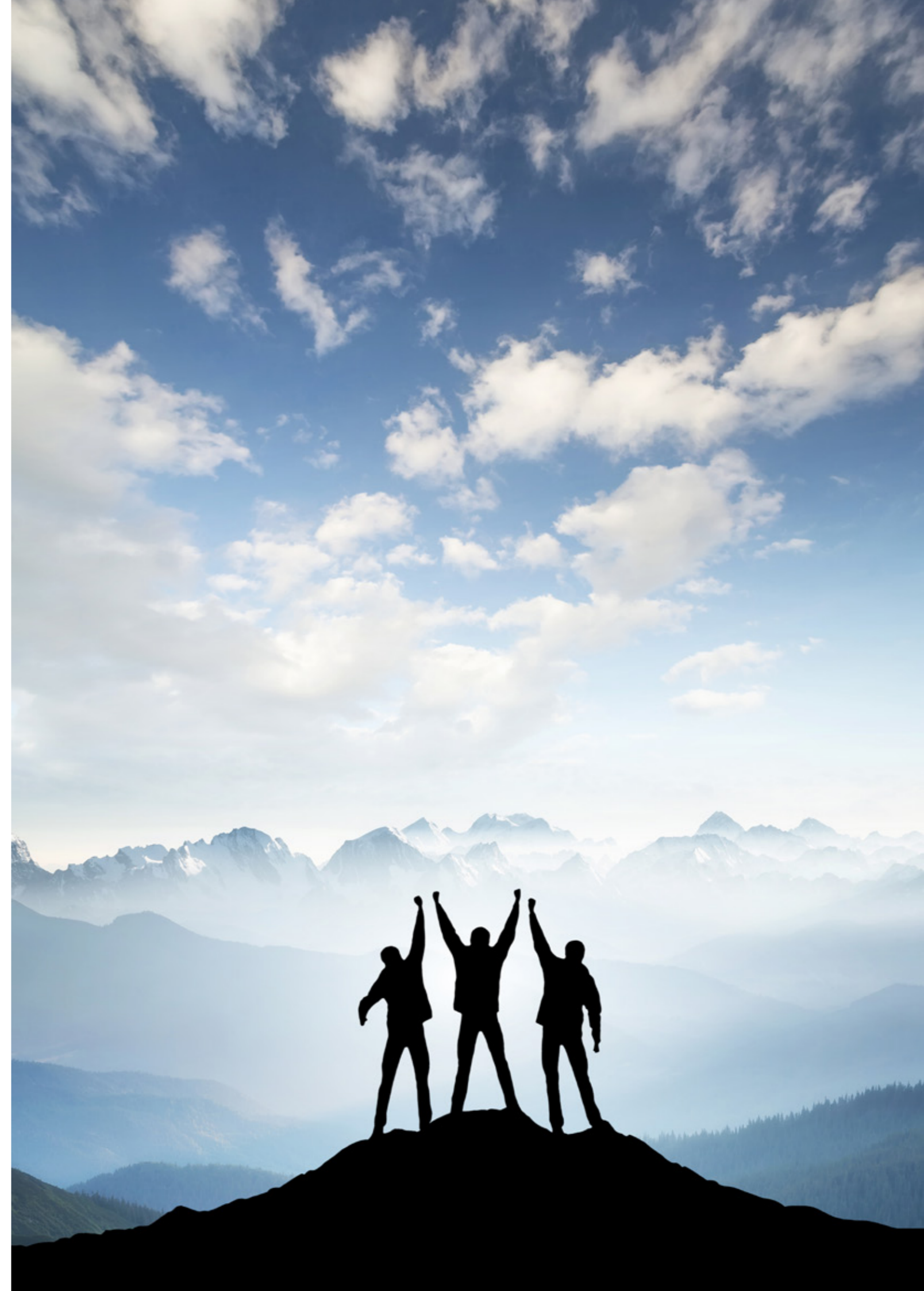
Only with the necessary dedication and **passion** of every single individual we are able to successfully fulfill and shape not just our commercial goals but critical social and environmental aspects at the same time. A one hundred percent solution orientation and a required portion of courage ensure that we repeatedly assert a dominant position in the market, in which our customers and partners can trust. Above all they appreciate not just our technically reliable solutions but as well our high level of transparency, sincere esteem and the communication skills of all our employees.

Our mission is the development of filtration solutions on the basis of continuous mutual cooperation with and for our customers. As filtration experts for advanced and customer-oriented solutions, our goals are **customer responsiveness, innovation, operational excellence, partnerships and added value**. The following core values provide the basis for our business:

- Integrity – honesty, high moral standards, loyalty, openness
- Employee and performance orientation
- Social responsibility and ecological sustainability
- Cultural sensitivity and respectful interaction
- Confidence in each other

Why choose BOLLFILTER

- Quick and flexible decisions
- Transparent communication
- Mutual cooperation
- Solution-oriented thinking and acting



You can count on our service

Close cooperation with our customers continues even after our filters have been delivered. We provide training in filter maintenance and servicing for your employees, offer you a comprehensive maintenance and repair service as well as a quick and reliable delivery of **BOLLFILTER GENUINE PARTS**.

In accordance with our "Global Agreement" our hotline is available **24-hours every day, seven days a week**. Our service engineers are on duty day and night, travelling and delivering important spare parts to our customers. But if you only use BOLLFILTER GENUINE PARTS, you will rarely need to use this service.

Why choose BOLLFILTER

- Commissioning of the filter systems
- Maintenance and servicing work
- Quick availability of spare parts
- 24-hour service hotline
- Comprehensive training courses for technicians



Boll & Kirch Filterbau GmbH
Siemensstrasse 10-14 • 50170 Kerpen
Tel: +49 2273 562-0
E-Mail: info@bollfilter.com
www.bollfilter.com

