

BOLLFILTER Duplex TYPE 2.04.5

with flanged connections DN 25–DN 80
optionally with heating

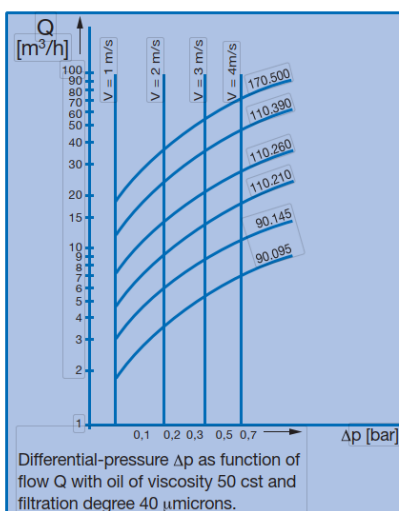
Application

Filtration of all liquids. For installation into suction or pressure pipework to protect plant components (valves, pumps, pressure gauges, nozzles etc.) preventing accumulation of dirt and sludge.

Operation

The Duplex Filter 2.04.5 allows change-over during operation without pressure-loss. The filter is compact and easy to maintain, requiring only manual cleaning when maximum allowable pressure drop is reached.

When maximum pressure drop is reached the standby filter chamber is brought on line simultaneously as the dirty one is isolated by means of the change-over valve. After venting, the dirty element can be removed, cleaned and refilled to be the standby filter chamber.



Optional Accessories

Differential pressure indicator type 4.36 can be supplied fitted at factory. The filter elements can be fitted with magnetic bars.



Cleaning

- Switch change-over valve to clean filter chamber
- Release pressure in the contaminated filter chamber by means of venting screw
- Lift the cover of the contaminated filter chamber
- Remove filter element
- Soak filter element in cleaning fluid, e.g. BOLL-CLEAN 2000, and clean with compressed air

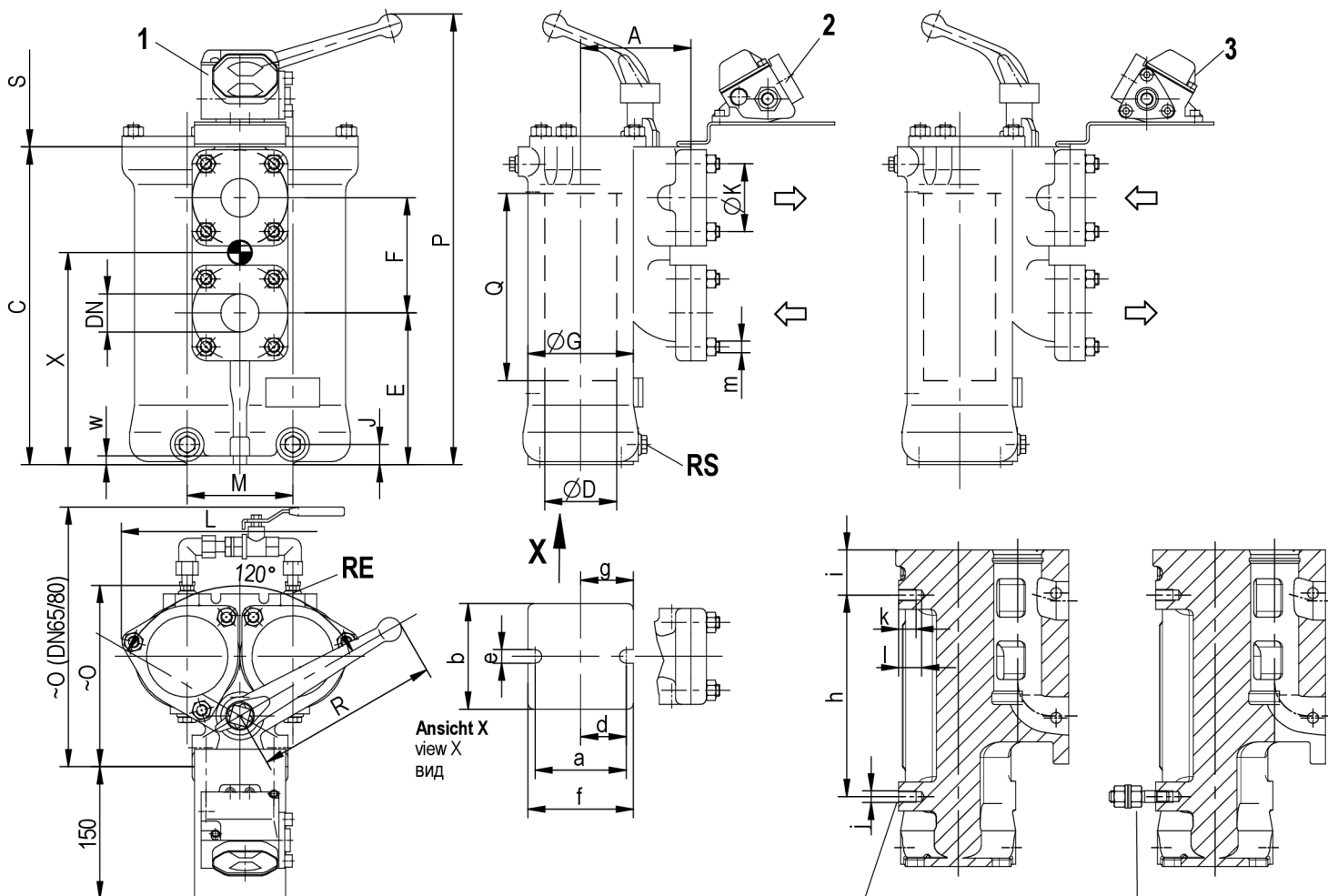
For details see operating instructions manual "maintenance and servicing".

Technical characteristics

- Filter housing of ductile iron; internally nickel lined for water application
- Change-over valve of cast iron; water filters rubber-lined
- Optionally star-pleated 1 or basket 2 filter element, star pleated element also available as disposable filter element
- Filter fineness: 10 microns to 5 mm
- Operating pressure up to 25 bars
- Lift the cover of the contaminated filter chamber

The Details

Z45540 – Type 2.04.5



RE Entlüftung G1/4
vent G1/4
выпуск воздуха G1/4

RS Entleerung G3/8
drain G3/8
дренажное отверстие G3/8

Flanschanschluss:
flanged joint:
Фланцевое соединение

auf Wunsch: Wandbefestigung
connection at side on request
Настенный монтаж по запросу

auf Wunsch: Erdungsanschluss
earthing connection
Подключение заземления по запросу

Auf Wunsch, on request, по Вашей просьбе

1 Differenzdruckanzeiger (DDA)
differential pressure indicator
индикатор перепада давления

2 DDA-Anbau und Durchflussrichtung für Sternsiebe
DPI-installation and flow direction for star-element
Приспособление для монтажа индикатора перепада и направление потока для гофрированный фильтрэлемент

3 DDA-Anbau und Durchflussrichtung für Korbsiebe
DPI-installation and flow direction for basket-element
Приспособление для монтажа индикатора перепада и направление потока для корзинчатый фильтрэлемент

S Siebausbau
filter element removal
Демонтаж элемента

Schwerpunkt
center of gravity
основной момент

Stiftschraube DIN939
stud bolt DIN939
установочный штифт DIN939

DN	K	m	
25	80	M10	M10 X 25
32	80	M10	M10 X 25

Sechskantschraube DIN931
hexagon screw DIN931
шестигранный винт DIN931

DN	K	m	
40	100	ø14	M12 X 50
50	110	ø14	M12 X 50
65	130	ø18	M16 X 50
80	150	ø18	M16 X 50

	h	i	j	k	l
DN25/32	130	36	M10	16	20
DN40/50	210	47	M12	17	25
DN65	350	61	M12	17	25
DN80	510	66	M12	17	25

Gehäuse gegossen, EN-GJS-400-15
housing cast
Литой корпус

Betriebsüberdruck: 25 bar bei 160°C
working pressure: 25 bar at 160°C
Расчетное давление

Allgemeintoleranzen DIN ISO 2768-mK
general tolerance DIN ISO 2768-mK
Общие допуски DIN ISO 2768-mK

Änderungen vorbehalten !
subject to alterations
Право на внесение изменений сохраняется

Bestellbeispiel
ordering example
Пример заказа

Typ	øG	Q	DN
2.04.5	90	145	32

øG	Q	DN		A	C	øD	E	F	J	L	M	~O	P	~R	S	a	b	d	e	f	g	w	Объем		
		MIN.	MAX.																				VOL. LITER	KG	X
90	95	25	32	95	199	65	79	80	22	206	92	153	346	193	170	85	92		12	110		9	2X1	17	141
90	145	32	40	95	249	65	129	80	22	206	92	154	396	193	220	85	92		12	110		9	2X1	18	164
110	210	40	50	115	330	85	157	120	20	250	110	184	470	193	300	85	110		14	110		9	2X2	29	207
110	260	50	65	128	385	85	208	120	20	250	110	196	525	193	350	85	110		14	110		9	2X3	36	245
110	390	65	80	180	523	85	317	140	34	260	120	337	678	318	480	120	65	75	14	200	137	20	2X4	55	344
170	500	80	100	214	690	124	453	160	50	370	203	397	829	318	700	174	120	105	18	220	135	22	2X13	107	438